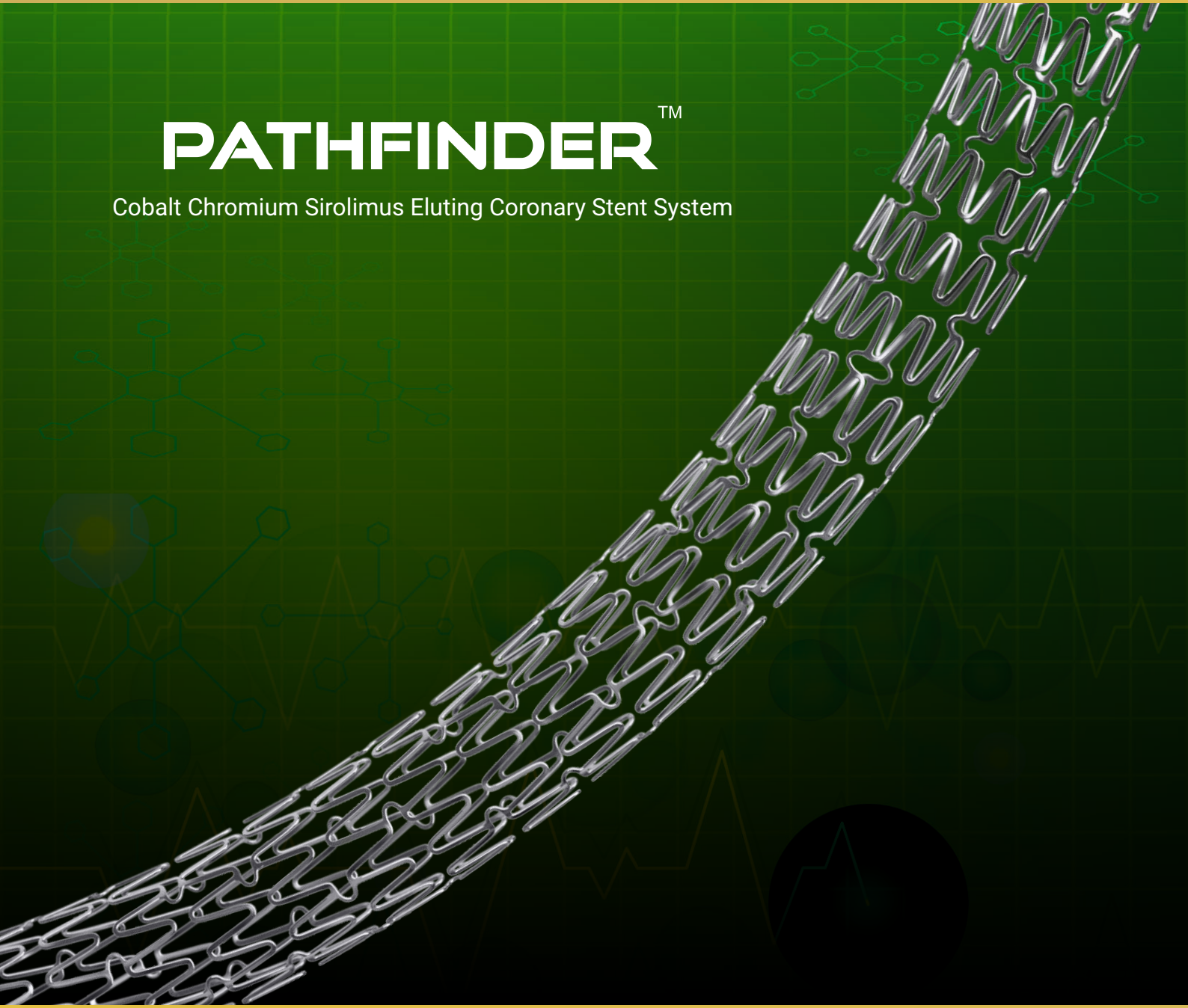


PATHFINDERTM

Cobalt Chromium Sirolimus Eluting Coronary Stent System



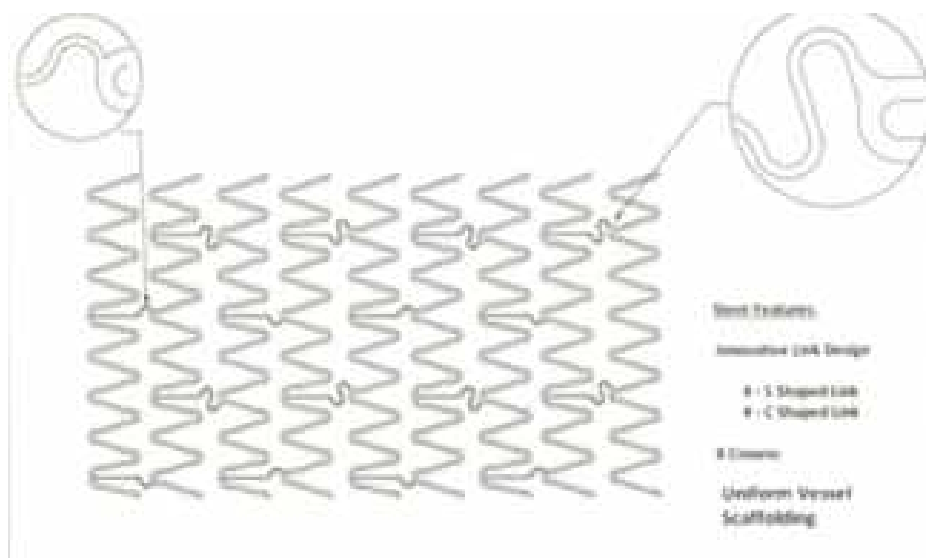
SCIENCE OF FLEXIBILITY AND TRACKABILITY



PATHFINDERTM

Cobalt Chromium Sirolimus Eluting Coronary Stent System

- Ultra-thin struts of 65 micron
- US patented open cell, 8 crown design with innovative 2 links “S” link and “C” link



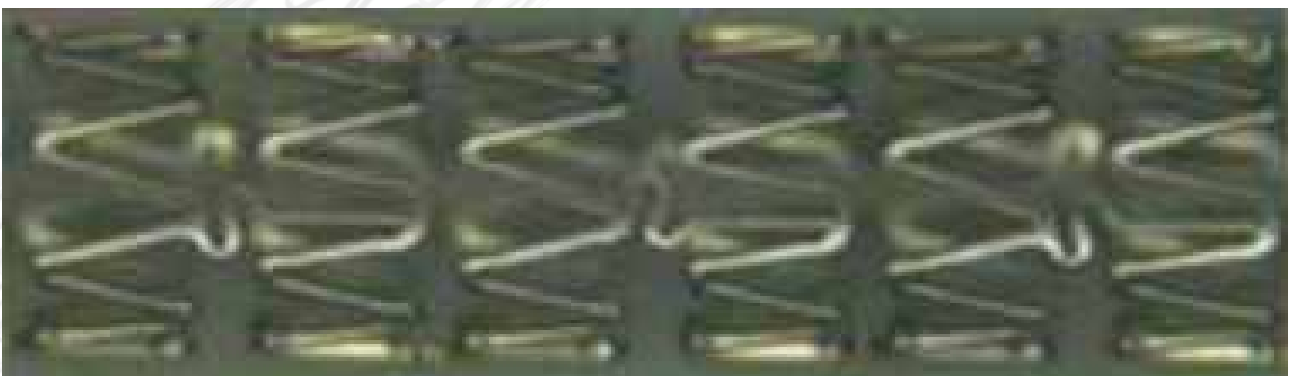
- “S” link and “C” link offers excellent vessel wall conformability
- Optimal radial strength with flexibility
- Low recoil $\leq 2\%$ ensures predictable results and Minimal foreshortening $< 1\%$
- MRI conditional

- Drug - Sirolimus
- Drug dose - $1 \mu\text{g}/\text{mm}^2$
- Drug release pattern - Controlled and consistent 28 days Controlled and consistent 28 days drug release kinetics to prevent smooth muscle cell proliferation



SCIENCE OF FLEXIBILITY AND TRACKABILITY

- Hydrophilic Coating: Provides enhanced lubricity and improves trackability.
- Laser welding: Provides low profile, high welding strength and consistent results.
- Tapered rounded smooth tip facilitates penetration through small openings, enhanced crossability and minimizes trauma.
- Tip entry profile: 0.016" (0.41 mm) for diameter 3 mm
- Crossing profile: 0.037" (0.94 mm) for diameter 3 mm



TECHNICAL SPECIFICATIONS:

Stent Material	Cobalt Chromium L605
Strut Thickness	65 µm
Recoil	≤ 2%
Compliance	Nominal: 8 bar , RBP: 14 bar / 16 bar
MRI Compatibility	MR Conditional
Diameter (mm)	2.25, 2.50, 2.75, 3.00, 3.50, 4.00 & 4.50 mm
Length (mm)	7, 10, 13, 15, 17, 20, 24, 28, 33, 38, 42, 45 & 48 mm
Type of Delivery System	Rapid Exchange
Balloon Overhang	<0.5 mm
Usable Catheter Length	1430 ± 30 mm
Guide Catheter Compatibility	5F

ORDERING INFORMATION:

Diameter (mm)	Length (mm)						
	2.25 mm	2.50 mm	2.75 mm	3.00 mm	3.50 mm	4.00 mm	4.50 mm
07 mm	PF 0722	PF 0725	PF 0727	PF 0730	PF 0735	PF 0740	PF 0745
10 mm	PF 1022	PF 1025	PF 1027	PF 1030	PF 1035	PF 1040	PF 1045
13 mm	PF 1322	PF 1325	PF 1327	PF 1330	PF 1335	PF 1340	PF 1345
15 mm	PF 1522	PF 1525	PF 1527	PF 1530	PF 1535	PF 1540	PF 1545
17 mm	PF 1722	PF 1725	PF 1727	PF 1730	PF 1735	PF 1740	PF 1745
20 mm	PF 2022	PF 2025	PF 2027	PF 2030	PF 2035	PF 2040	PF 2045
24 mm	PF 2422	PF 2425	PF 2427	PF 2430	PF 2435	PF 2440	PF 2445
28 mm	PF 2822	PF 2825	PF 2827	PF 2830	PF 2835	PF 2840	PF 2845
33 mm	PF 3322	PF 3325	PF 3327	PF 3330	PF 3335	PF 3340	PF 3345
38 mm	PF 3822	PF 3825	PF 3827	PF 3830	PF 3835	PF 3840	PF 3845
42 mm	PF 4222	PF 4225	PF 4227	PF 4230	PF 4235	PF 4240	PF 4245
45 mm	PF 4522	PF 4525	PF 4527	PF 4530	PF 4535	PF 4540	PF 4545
48 mm	PF 4822	PF 4825	PF 4827	PF 4830	PF 4835	PF 4840	PF 4845

Corporate Office - Sahajanand Laser Technology Ltd.

E-30, Electronic Estate, G.I.D.C., Sector-26,
Gandhinagar - 382 028, Gujarat, India.

Tel : +91-79-2328-7461-63-64, Fax : +91-79-2328-7470

Cell : +91-90-9904-0080

Email : mkt@SLTL.com

Log on to :

www.SLTLMedical.com

www.SLTL.com

Manufacturing Site - Sahajanand Laser Technology Ltd.

A-8, Electronic Estate, G.I.D.C., Sector-25,
Gandhinagar - 382 016, Gujarat, India.

Cell : +91-90-9904-0090, Fax : +91-79-2328-7470