

*Experience High success with*

# Hexapro<sup>TM</sup>

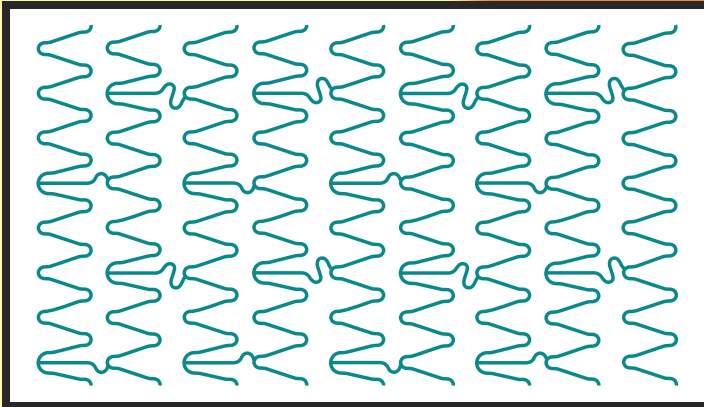
**COBALT CHROMIUM CORONARY STENT SYSTEM**



CE  
1023

<sup>TM</sup>  
**SLTL**  
Group

## Stent Design:



## Stent Features:

- 8 crowns for uniform & optimum vessel scaffolding
- Customized crown length for 2.25, 2.50, 2.75, 3.0, 3.5 & 4.0 mm
- Maintain consistent metal-artery ratio
- Innovative "S" link and alternate "C" link design
- Superior stent strength through strong cobalt chromium alloy
- Thin strut (60  $\mu\text{m}$ )
- Excellent deliverability & conformability
- Growth of 8% from nominal pressure to RBP allowing complete deployment and good wall apposition
- Available in length upto 45 mm

*Minimal Balloon Overhang which minimizes risk of edge dissection*

*No Foreshortening suitable for Ostial lesion*

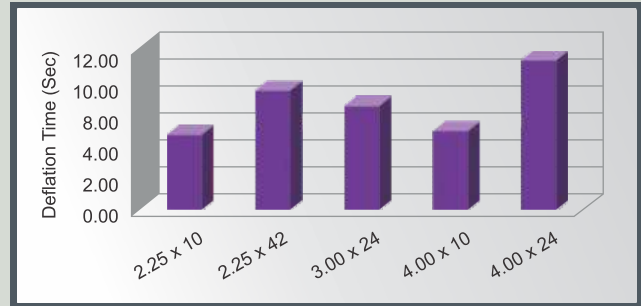
*Low deflation time*

*Excellent & uniform scaffolding*

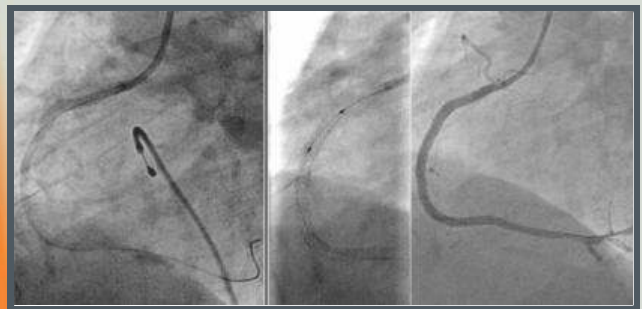
*High radial strength which makes it ideal for proximal lesion*

*Low recoil ensures predictable results*

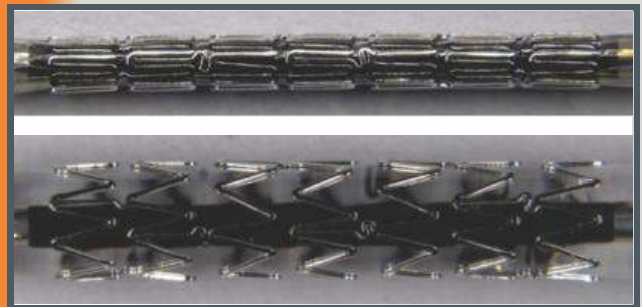
## Balloon Deflation Time



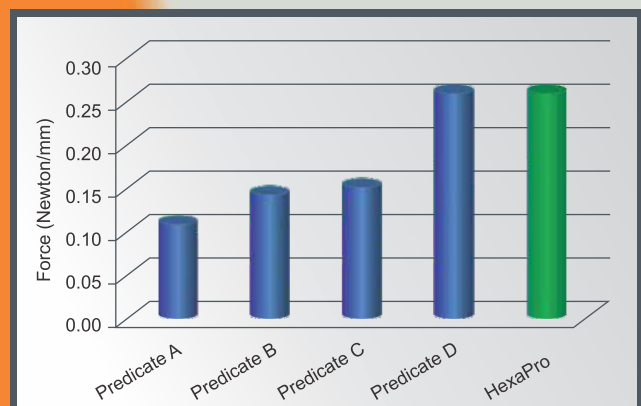
## Pristine Angiographic Appearance



## No Foreshortening



## Radial Strength



Technical Specifications	
Stent material	: L605 Cobalt Chromium Alloy
Strut Thickness	: 60 micron
Crossing profile	: 0.95mm (0.037")
Recoil	: ≤ 2 %
Compliance	: Nominal : 8atm, RBP: 14atm/16atm
MRI Compatibility	: MRI Compatible
Available sizes	
Diameter	: 2.25, 2.50, 2.75, 3.0, 3.5 & 4.0mm
Length	: 7, 10, 13, 15, 17, 20, 24, 28, 33, 38 & 42mm

### Compliance Chart

Pressure [atm]	2.25 mm	2.5 mm	2.75 mm	3.0 mm	3.5 mm	4.0 mm
4	1.98	2.25	2.48	2.74	3.25	3.72
6	2.13	2.39	2.62	2.88	3.35	3.85
8	2.25	2.50	2.75	3.00	3.50	4.00
9	2.28	2.54	2.78	3.03	3.54	4.07
10	2.31	2.57	2.82	3.10	3.57	4.14
11	2.33	2.60	2.86	3.13	3.60	4.19
12	2.35	2.62	2.89	3.17	3.63	4.25
13	2.37	2.64	2.91	3.19	3.66	4.28
14	2.39	2.66	2.93	3.21	3.70	4.32
15	2.41	2.68	2.95	3.23	3.74	4.35
16	2.43	2.70	2.97	3.25	3.78	4.38
17	2.45	2.73	3.00	3.28	3.81	4.40
18	2.48	2.76	3.03	3.31	3.84	4.42
20	2.51	2.79	3.06	3.34	3.86	-
22	2.54	2.82	3.09	3.37	-	-

■ Nominal ■ RBP

### Product Catalog Number

Length/Dia	2.25mm	2.50mm	2.75mm	3.00mm	3.50mm	4.00mm
07mm	HP 0722	HP 0725	HP 0727	HP 0730	HP 0735	HP 0740
10mm	HP 1022	HP 1025	HP 1027	HP 1030	HP 1035	HP 1040
13mm	HP 1322	HP 1325	HP 1327	HP 1330	HP 1335	HP 1340
15mm	HP 1522	HP 1525	HP 1527	HP 1530	HP 1535	HP 1540
17mm	HP 1722	HP 1725	HP 1727	HP 1730	HP 1735	HP 1740
20mm	HP 2022	HP 2025	HP 2027	HP 2030	HP 2035	HP 2040
24mm	HP 2422	HP 2425	HP 2427	HP 2430	HP 2435	HP 2440
28mm	HP 2822	HP 2825	HP 2827	HP 2830	HP 2835	HP 2840
33mm	HP 3322	HP 3325	HP 3327	HP 3330	HP 3335	HP 3340
38mm	HP 3822	HP 3825	HP 3827	HP 3830	HP 3835	HP 3840
42mm	HP 4222	HP 4225	HP 4227	HP 4230	HP 4235	HP 4240

\* Additional sizes are also available on request

#### International Head Quarter - Sahajanand Laser Technology Ltd.

E-30, G.I.D.C., Electronic Estate, Sector-26,

Gandhinagar - 382 028. (Gujarat) India.

Tel. : +91 - 79 - 2324 1379 / 80,

Fax : +91 - 79 - 2324 1465

Email : mkt@SLTL.com

#### Log on to :

www.sltlmedical.com

www.SLTL.com

#### India Marketing - Sahajanand Laser Technology Ltd.

41, Newyork Tower-A, Nr. Thaltej Cross Road,

S.G. Highway, Ahmedabad - 380 054. Gujarat, India.

Tel.: +91-79-2685 4537 / 38 , Fax: +91-79-2685 4539

#### Manufacturing - Sahajanand Laser Technology Ltd.

A-8, G.I.D.C., Electronic Estate, Sector-25,

Gandhinagar - 382 016. (Gujarat) India.

Tel.: +91 - 79 - 2328 7462, Fax: +91 - 79 - 2324 1465